




Features

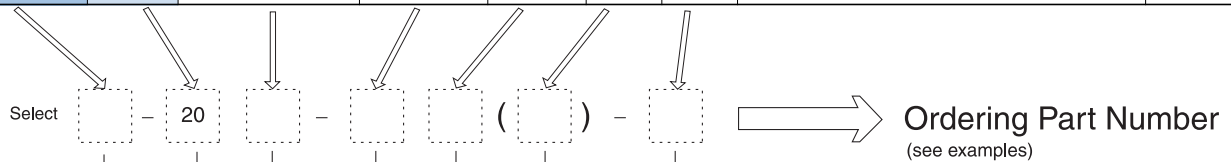
- AISG 1.1/2.0 Protocol, IP67
- IEC 60130-9 Compatible
- DIN 45326 Standard
- UL Recognized  us
- EMI Protected, Safe Connection, Easy Mounting
- M16 Locking System
- RoHS Compliant

Applications

- Telecommunication
- Control Engineering
- Automation
- General Industrial

Part Numbering

Series	Size	Body Type	No. of Contacts	Contact Type	Option		Notes	Page
					PCB	Potting		
SU	20	SP	3,4,5,6 8,12,14	P			Plug (Pin Contact)	6
		P		S			Plug (Socket Contact)	8
		SBR		S	●		Receptacle (Socket Contact)	6
		SBR1		S	●	●	Receptacle (Socket Contact)	6
		BR		P	●	●	Receptacle (Pin Contact)	8
		SRB		S	●	●	Receptacle (Socket Contact, Rear mount)	6
		SPR		S	●	●	Receptacle (Socket Contact, Flange type)	7
		PR		P	●	●	Receptacle (Pin Contact, Flange type)	8
		PR3		P	●	●	Receptacle (Pin Contact, Long Flange type)	9



Examples

SU - 20SP - 3P

SU series - Size 20 Plug - 3 contact pin

SU - 20P - 8S

SU series - Size 20 Plug - 8 contact socket

SU - 20SBR - 12S

SU series - Size 20 Receptacle - 12 contact socket

SU - 20BR - 8P (PCB)

SU series - Size 20 Receptacle - 8 contact pin (PCB termination)

Connector Series

SU 20 Series(IP67 type)

Body Type

SP : Plug
 P : Plug
 SBR : Receptacle
 SBR1 : Receptacle
 BR : Receptacle
 SRB : Receptacle, Rear mount
 SPR : Receptacle, Flange type
 PR : Receptacle, Flange type
 PR3 : Receptacle, Long Flange type
 BRC : Receptacle cap (accessory)
 SBRC : Receptacle cap (accessory)

No. of Contacts

3,4,5,6,8,12,14

Contact Type

P : Pin
 S : Socket
 None : Receptacle cap

Contact Option(for receptacle)


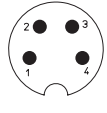
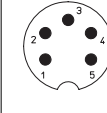
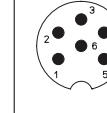
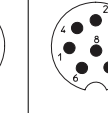
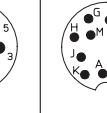
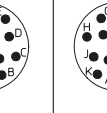
PCB : PCB contact termination

Potting Option

1 : Epoxy or silicon

Specifications subject to change without notice. Consult E-VALUCON for the latest specifications.

Major Performance / Contact Arrangements

Performance	Size 20						
	3	4	5	6	8	12	14
Contact Arrangement							
Rated Voltage	250V					60V	
Rated Current(40 °C)	5A					3A	
Rated Impulse Withstand Voltage	1500V					1000V	
Insulation Resistance	> 10 ¹⁰ Ω						
Contact Resistance	< 5mΩ						
Wire Gauge	max.0.75mm ² (max.AWG 20)					max.0.25mm ² (max.AWG 24)	
Cable Diameter	Ø4 ~ Ø8						
Temperature Range	- 40 °C ~ +85 °C						
IP Protection Rating	IP67						

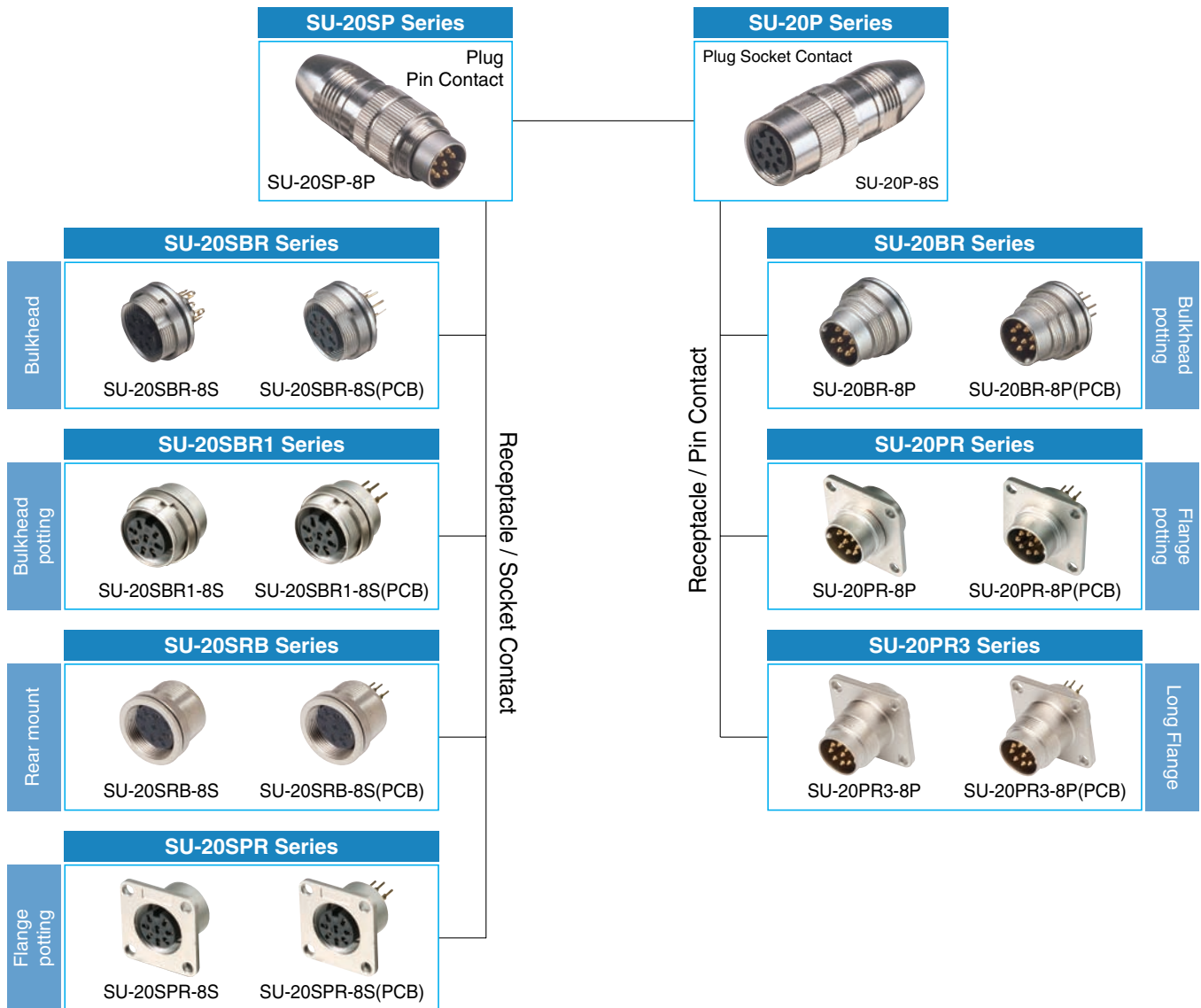
- 1 Withstanding voltage is the tested voltage value.
- 2 Insulation resistance is measured at DC 100V.
- 3 Contact resistance is measured at DC 1A.
- Specifications subject to change without notice.
- Consult Sam Woo Electronics for the latest specifications.
- 4 Connector contact arrangement is from solder pot(plug).

Material Used / Finish

	Material	Finish
Body	ZnDC, Brass	Ni Plating
Insulator	PA	Black
Contacts	Pin	Brass
	Socket	Phosphor bronze
		Gold Plating

Specifications subject to change without notice. Consult E-VALUCON for the latest specifications.

SU Series Mini-map

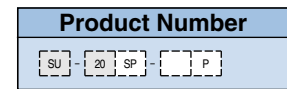
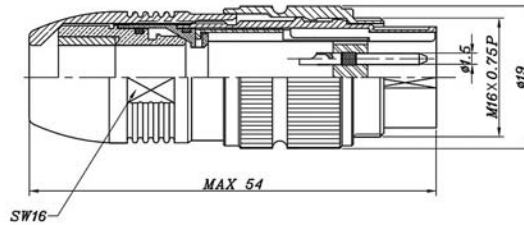
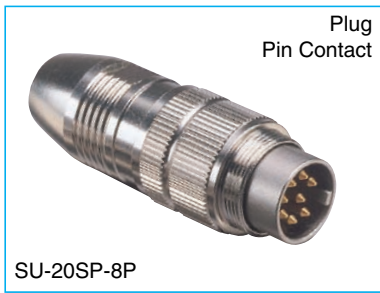


Specifications subject to change without notice. Consult E-VALUCON for the latest specifications.



Specifications subject to change without notice. Consult E-VALUCON for the latest specifications.

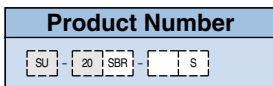
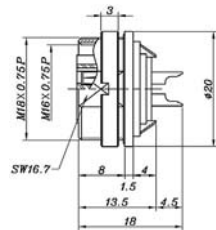
SU-20SP Series



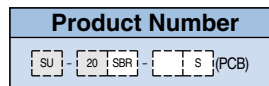
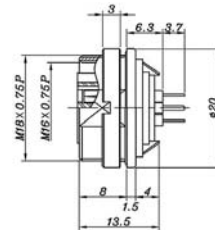
No. of Contact : 3,4,5,6,8,12,14

SU-20SBR Series

Bulkhead



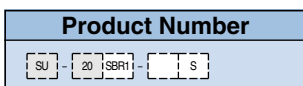
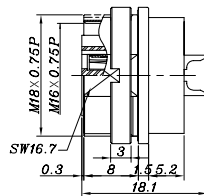
No. of Contact : 3,4,5,6,8,12,14



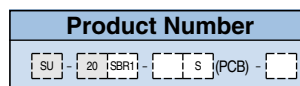
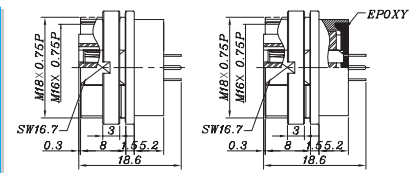
No. of Contact : 3,4,5,6,8,12,14

SU-20SBR1 Series

Bulkhead, Potting



No. of Contact : 3,4,5,6,8,12,14



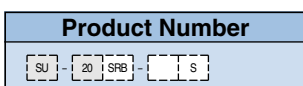
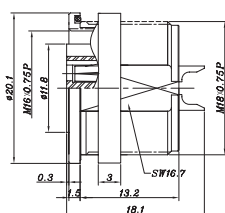
No. of Contact : 3,4,5,6,8,12,14

Potting option
1 : Epoxy or Silicon

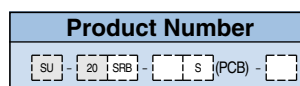
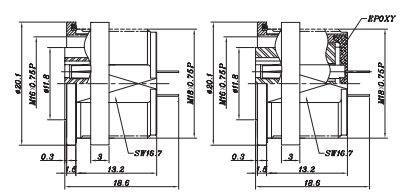
With Epoxy

SU-20SRB Series

Rear mount



No. of Contact : 3,4,5,6,8,12,14



No. of Contact : 3,4,5,6,8,12,14

Potting option
1 : Epoxy or Silicon

With Epoxy

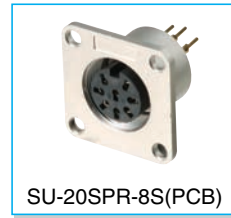
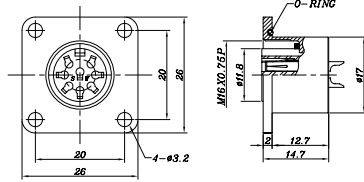
Specifications subject to change without notice. Consult E-VALUCON for the latest specifications.

SU-20SPR Series

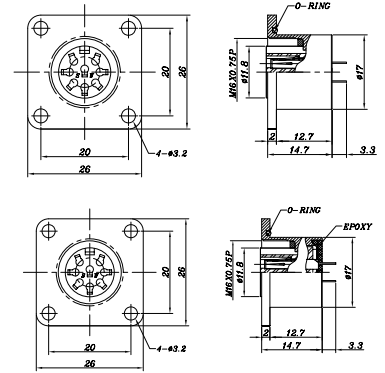
Flange, Potting



SU-20SPR-8S



SU-20SPR-8S(PCB)



Product Number

SU	-	20	SPR	-	S
----	---	----	-----	---	---

No. of Contact : 3,4,5,6,8,12,14

Product Number

SU	-	20	SPR	-	S	(PCB)	-	
----	---	----	-----	---	---	-------	---	--

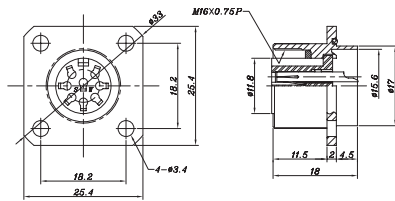
No. of Contact : 3,4,5,6,8,12,14

With Epoxy

Potting option
1 : Epoxy or Silicon



SU-20SPR5-8S



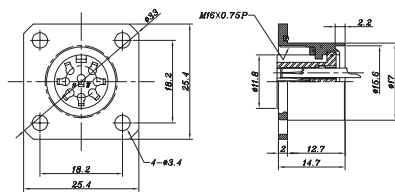
Product Number

SU	-	20	SPR5	-	S
----	---	----	------	---	---

No. of Contact : 3,4,5,6,8,12,14



SU-20SPR6-8S



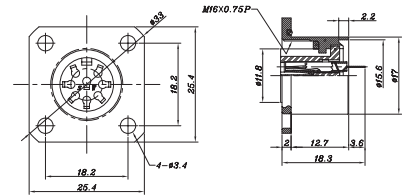
Product Number

SU	-	20	SPR6	-	S
----	---	----	------	---	---

No. of Contact : 3,4,5,6,8,12,14



SU-20SPR6-8S(PCB)



Product Number

SU	-	20	SPR6	-	S	(PCB)	-	
----	---	----	------	---	---	-------	---	--


No. of Contact : 3,4,5,6,8,12,14

1 : Epoxy or Silicon

Specifications subject to change without notice. Consult E-VALUCON for the latest specifications.



Features

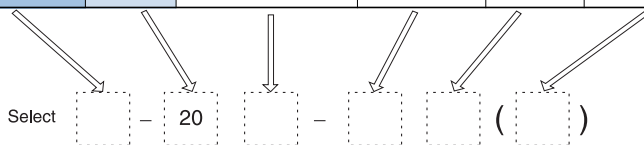
- AISG 1.1/2.0 Protocol, IP67
- IEC 60130-9 Compatible
- DIN 45326 Standard
- UL Recognized  US
- EMI Protected, Safe Connection, Easy Mounting
- M16 Locking System
- RoHS Compliant

Applications

- Telecommunication
- Control Engineering
- Automation
- General Industrial

Part Numbering

Series	Size	Body Type	No. of Contacts	Contact Type	Option PCB	Notes	Page
SU1	20	SP	3,4,5,6 8,12,14	P		Plug (Pin Contact)	14
		P		S		Plug (Socket Contact)	16
		SBR		S	●	Receptacle (Socket Contact)	14
		SBR1		S	●	Receptacle (Socket Contact)	14
		BR		P	●	Receptacle (Pin Contact)	16
		SRB		S	●	Receptacle (Socket Contact, Rear mount)	14
		SPR		S	●	Receptacle (Socket Contact, Flange type)	15
		PR		P	●	Receptacle (Pin Contact, Flange type)	16
		PR3		P	●	Receptacle (Pin Contact, Long Flange type)	17



Ordering Part Number
(see examples)

Connector Series

SU1 20 Series(IP40 type)

Body Type

SP : Plug
 P : Plug
 SBR : Receptacle
 SBR1 : Receptacle
 BR : Receptacle
 SRB : Receptacle, Rear mount
 SPR : Receptacle, Flange type
 PR : Receptacle, Flange type
 PR3 : Receptacle, Long Flange type
 BRC : Receptacle cap (accessory)
 SBRC : Receptacle cap (accessory)

No. of Contacts

3,4,5,6,8,12,14

Contact Type

P : Pin
 S : Socket
 None : Receptacle cap

Contact Option(for receptacle)

PCB : PCB contact termination

Examples

SU1 - 20SP - 3P

SU1 series - Size 20 Plug - 3 contact pin

SU1 - 20P - 8S

SU1 series - Size 20 Plug - 8 contact socket

SU1 - 20SBR - 12S


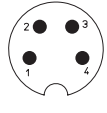
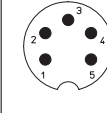
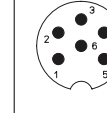
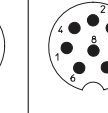
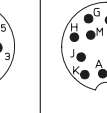
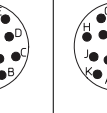
SU1 series - Size 20 Receptacle - 12 contact socket

SU1 - 20BR - 8P (PCB)

SU1 series - Size 20 Receptacle - 8 contact pin (PCB termination)

Specifications subject to change without notice. Consult E-VALUCON for the latest specifications.

Major Performance / Contact Arrangements

Performance	Size 20						
	3	4	5	6	8	12	14
Contact Arrangement							
Rated Voltage	250V					60V	
Rated Current(40 °C)	5A					3A	
Rated Impulse Withstand Voltage	1500V					1000V	
Insulation Resistance	> 10 ¹⁰ Ω						
Contact Resistance	< 5mΩ						
Wire Gauge	max.0.75mm ² (max.AWG 20)					max.0.25mm ² (max.AWG 24)	
Cable Diameter	Ø4 ~ Ø8						
Temperature Range	- 40 °C ~ +85 °C						
IP Protection Rating	IP40						

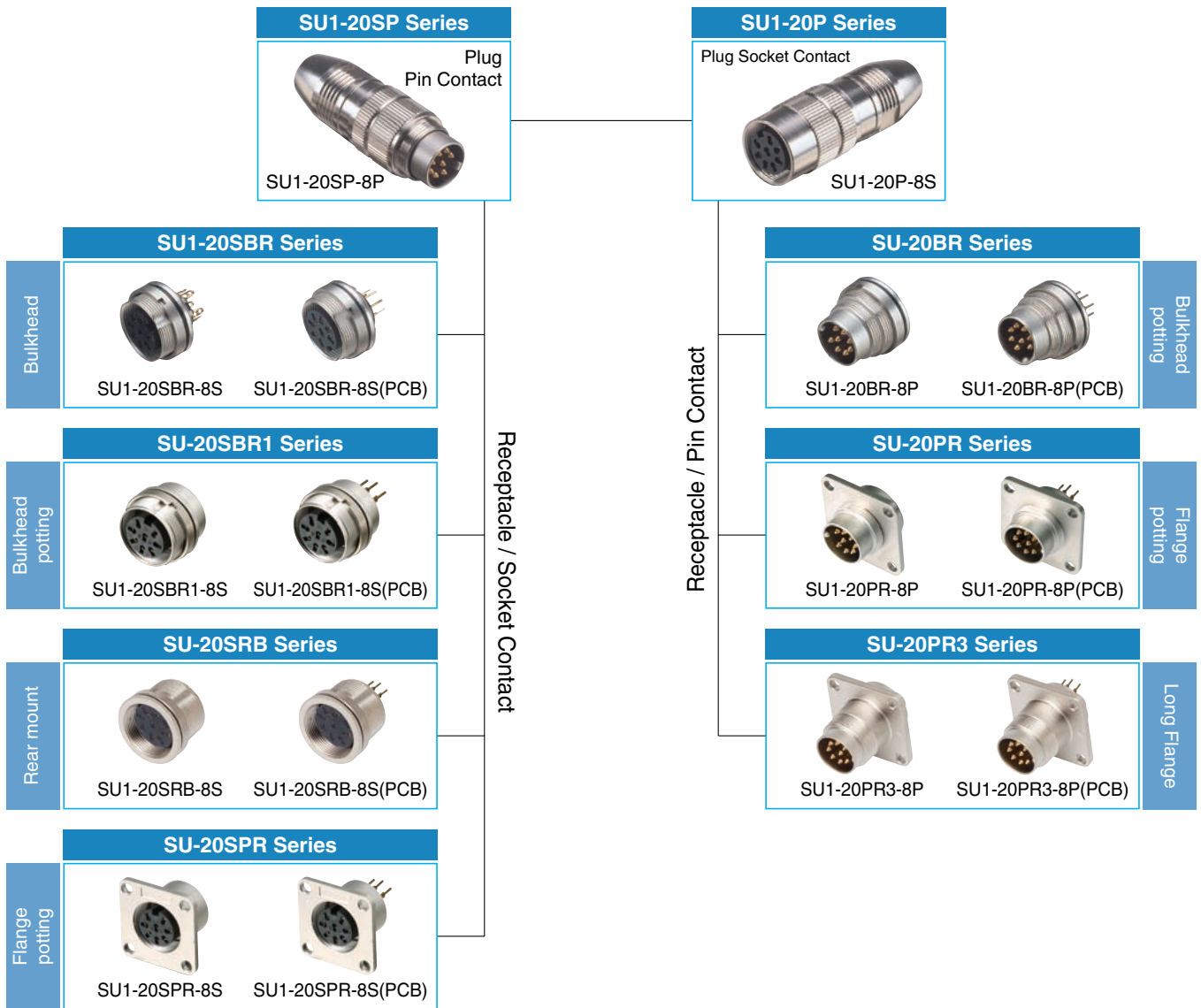
- ¹ Withstanding voltage is the tested voltage value.
- ² Insulation resistance is measured at DC 100V.
- ³ Contact resistance is measured at DC 1A.
- Specifications subject to change without notice.
- Consult Sam Woo Electronics for the latest specifications.
- ⁴ Connector contact arrangement is from solder pot(plug).

Material Used / Finish

		Material	Finish
Body		ZnDC, Brass	Ni Plating
Insulator		PA	Black
Contacts	Pin	Brass	Gold Plating
	Socket	Phosphor bronze	Gold Plating

Specifications subject to change without notice. Consult E-VALUCON for the latest specifications.

SU1 Series Mini-map

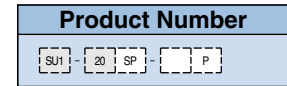
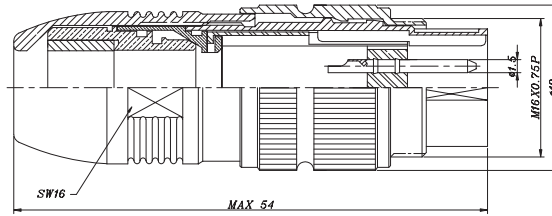
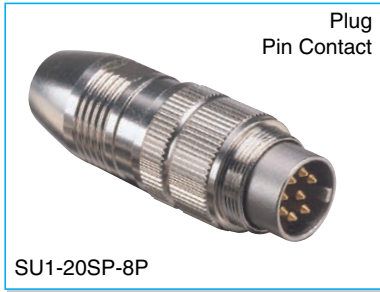


Specifications subject to change without notice. Consult E-VALUCON for the latest specifications.



Specifications subject to change without notice. Consult E-VALUCON for the latest specifications.

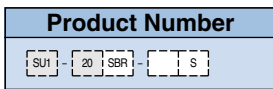
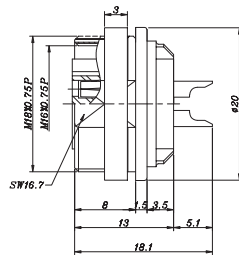
SU1-20SP Series



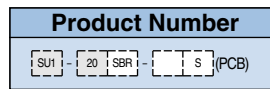
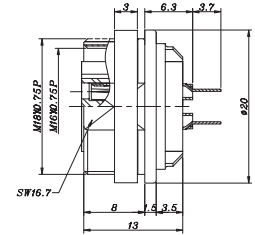
No. of Contact : 3,4,5,6,8,12,14

SU1-20SBR Series

Bulkhead



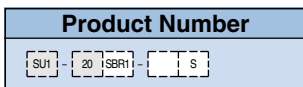
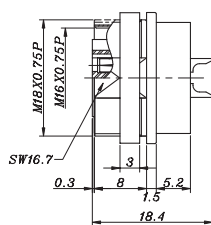
No. of Contact : 3,4,5,6,8,12,14



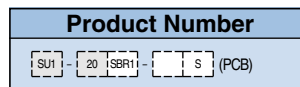
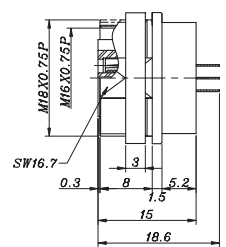
No. of Contact : 3,4,5,6,8,12,14

SU1-20SBR1 Series

Bulkhead



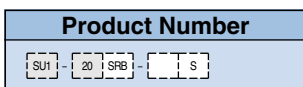
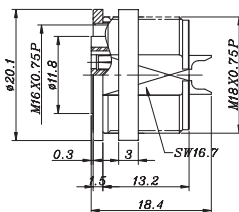
No. of Contact : 3,4,5,6,8,12,14



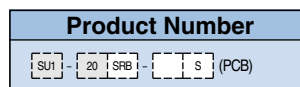
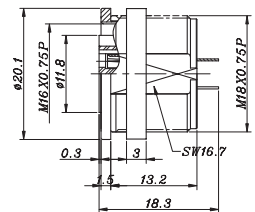
No. of Contact : 3,4,5,6,8,12,14

SU1-20SRB Series

Rear mount



No. of Contact : 3,4,5,6,8,12,14

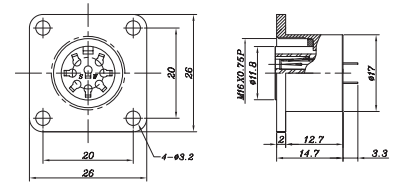
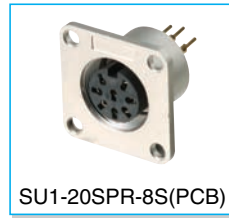
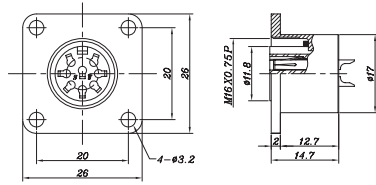


No. of Contact : 3,4,5,6,8,12,14

Specifications subject to change without notice. Consult E-VALUCON for the latest specifications.

SU1-20SPR Series

Flange



Product Number

SU1	-	20	SPR	-	S
-----	---	----	-----	---	---

↳ No. of Contact : 3,4,5,6,8,12,14

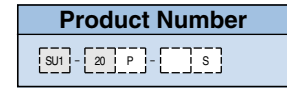
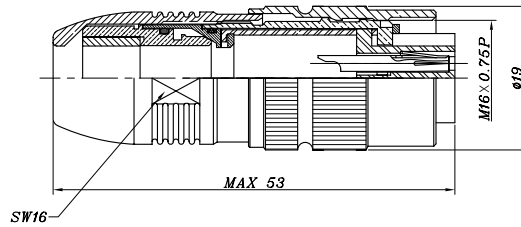
Product Number

SU1	-	20	SPR	-	S	(PCB)
-----	---	----	-----	---	---	-------

↳ No. of Contact : 3,4,5,6,8,12,14

Specifications subject to change without notice. Consult E-VALUCON for the latest specifications.

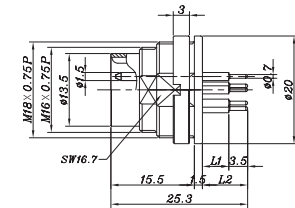
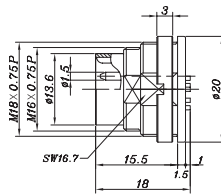
SU1-20P Series



No. of Contact : 3,4,5,6,8,12,14

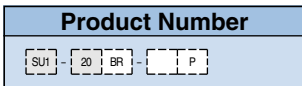
SU1-20BR Series

Bulkhead

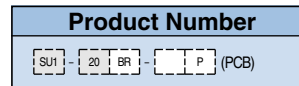


L1 and L2 customizable upon request.

L ₁	L ₂
4.8	8.4



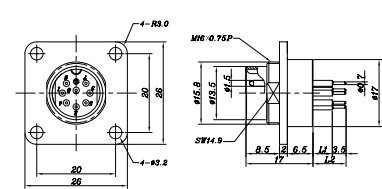
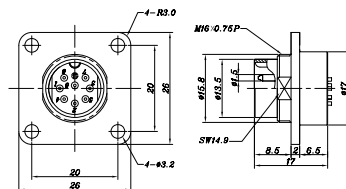
No. of Contact:3,4,5,6,8,12,14



No. of Contact:3,4,5,6,8,12,14

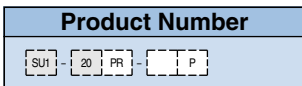
SU1-20PR Series

Flange

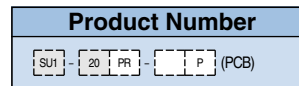


L1 and L2 customizable upon request.

L ₁	L ₂
4.8	8.4



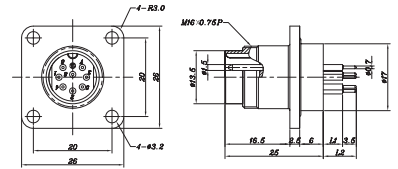
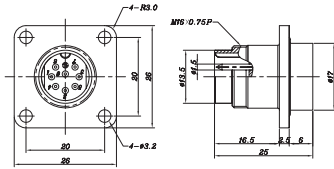
No. of Contact:3,4,5,6,8,12,14



No. of Contact:3,4,5,6,8,12,14

SU1-20PR3 Series

Long Flange



L1 and L2 customizable upon request.

L ₁	L ₂
4.8	8.4

Product Number			
SU1	- 20	PR3	- [] P

↳ No. of Contact: 3,4,5,6,8,12,14

Product Number			
SU1	- 20	PR3	- [] P (PCB)

↳ No. of Contact: 3,4,5,6,8,12,14

Specifications subject to change without notice. Consult E-VALUCON for the latest specifications.



Features

- AISG 1.1/2.0 Protocol
- IP 67/IP68
- DIN 45326 Standard Connector Cable Assembly
- Available in UL 20966 / UL 20866 and UL 20276
- Female to Female, Male to Male, Female to Male
- Available in 1m to 100 m
- RoHS Compliant
- PVC Free

Applications

- Telecommunication
- RET Control Cable
- Adapter Cable
- General Industrial

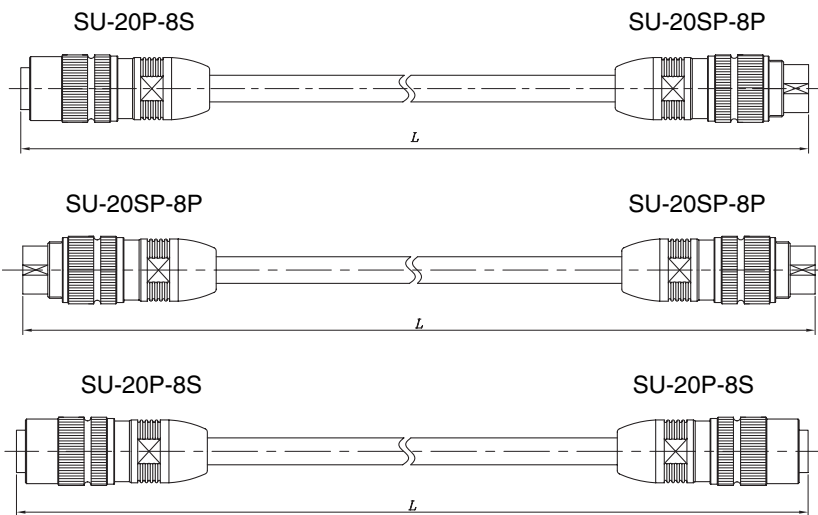
Plug Cable Assembly

Connector A		Connector B		Cable Length, L(m)	Part Number
SU-20SP-8P	Male contact	SU-20P-8S	Female contact	1m~ 100m	SW - 4509 - ***
SU-20SP-8P	Male contact	SU-20SP-8P	Male contact	1m~ 100m	SW - 4510 - ***
SU-20P-8S	Female contact	SU-20P-8S	Female contact	1m~ 100m	SW - 4994 - ***

* The last three digits of part number indicates cable length. Cable length can be customized.

Connector A

Connector B



MODEL NO.	L	MODEL NO.	L
SW-4509-001	1M	SW-4509-025	25M
SW-4509-002	2M	SW-4509-040	40M
SW-4509-003	3M	SW-4509-050	50M
SW-4509-005	5M	SW-4509-060	60M
SW-4509-010	10M	SW-4509-080	80M
SW-4509-020	20M	SW-4509-100	100M

MODEL NO.	L	MODEL NO.	L
SW-4510-001	1M	SW-4510-025	25M
SW-4510-002	2M	SW-4510-040	40M
SW-4510-003	3M	SW-4510-050	50M
SW-4510-005	5M	SW-4510-060	60M
SW-4510-010	10M	SW-4510-080	80M
SW-4510-020	20M	SW-4510-100	100M

MODEL NO.	L	MODEL NO.	L
SW-4994-001	1M	SW-4994-025	25M
SW-4994-002	2M	SW-4994-040	40M
SW-4994-003	3M	SW-4994-050	50M
SW-4994-005	5M	SW-4994-060	60M
SW-4994-010	10M	SW-4994-080	80M
SW-4994-020	20M	SW-4994-100	100M



● SW-4509-001

- Connector : SU-20SP-8P & SU-20P-8S
- Cable Diameter : Ø8mm
- Cable Length : 1M

● SW-4509T-001

- Connector : SU-20SP-8S & SU-20P-8S
- Cable Diameter : Ø8mm
- With shrink tube
- Cable Length : 1M

Specifications subject to change without notice. Consult E-VALUCON for the latest specifications.



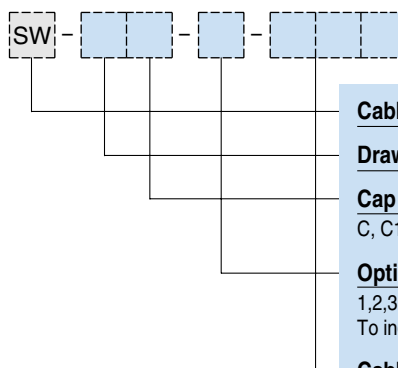
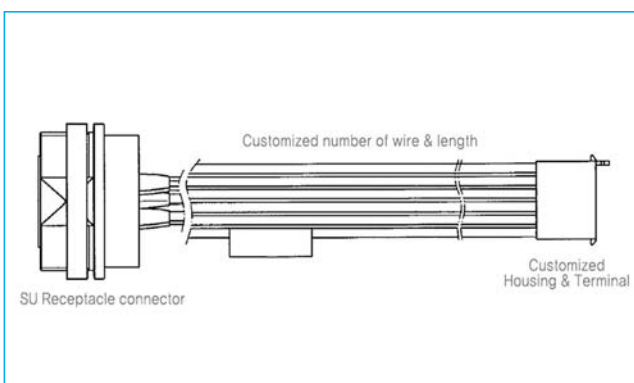
Features

- AISG 1.1/2.0 Protocol Standard
- IP 67/IP68
- UL1569, UL1015, UL 1431, UL3385
- Plastic/Metal Caps Available
- RoHS Compliant
- PVC Free

Applications

- Telecommunication
- RCU (Remote Control Unit)
- Lightning Protection Unit
- CCU (Central Control Unit)
- Junction Box
- Actuator

Part Numbering



Cable Assembly Series

Drawing Number

Cap (If Necessary)

C, C1, C2, C3, C4, C5(See Page 26)

Optional Suffix (Omissible)

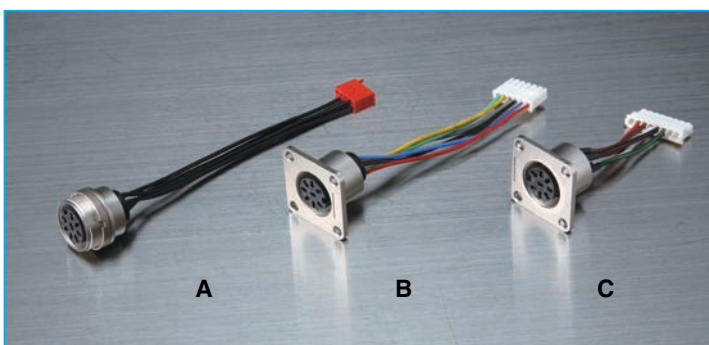
1,2,3

To indicate modification of original

Cable Length : 3 Digits (Unit : cm)

Ex) Using 30cm cable : 030

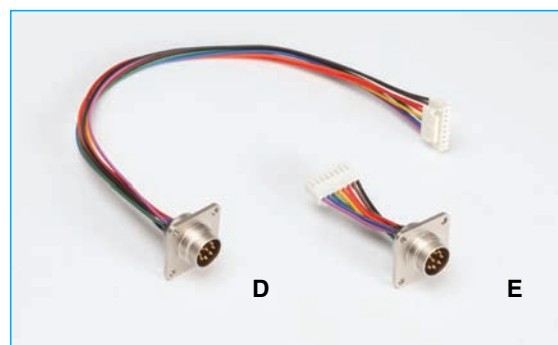
Cable Assembly for Receptacle



Female Receptacle Cable Assembly

Type	Construction
A	Female Receptacle + Wire + Housing & Terminal
B	Female Flange Receptacle + Wire + Housing & Terminal
C	Female Flange Receptacle + Wire(Short) + Housing & Terminal

* For additional information, please contact Sam Woo Electronics.



Male Receptacle Cable Assembly

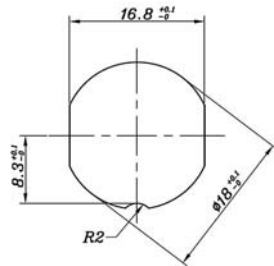
Type	Construction
D	Male Receptacle + Wire + Housing & Terminal
E	Male Receptacle + Wire (Short) + Housing & Terminal

* Please contact Sam Woo for further information.

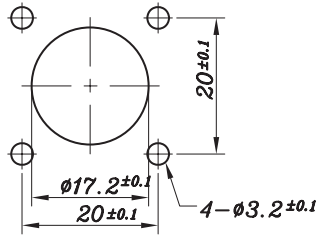
Specifications subject to change without notice. Consult E-VALUCON for the latest specifications.

Panel Layout

Panel Cut-out

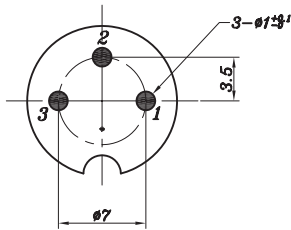


Panel Layout

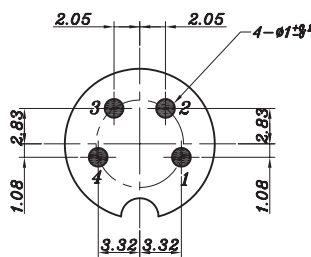


PCB Layout

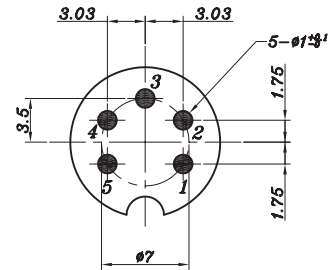
20 Size - 3 Core



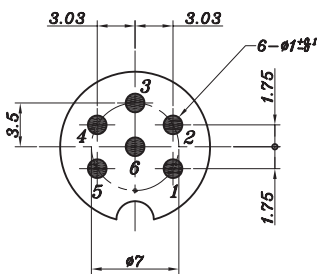
20 Size - 4 Core



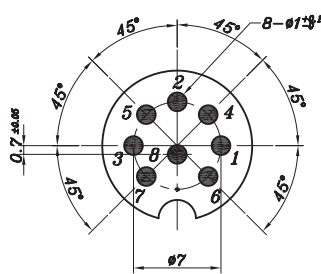
20 Size - 5 Core



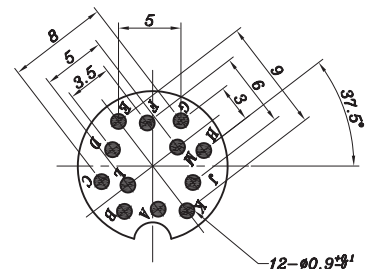
20 Size - 6 Core



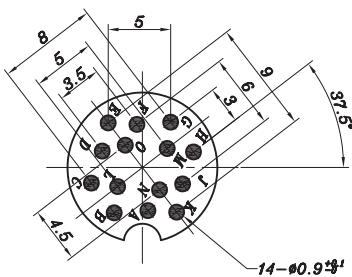
20 Size - 8 Core



20 Size - 12 Core

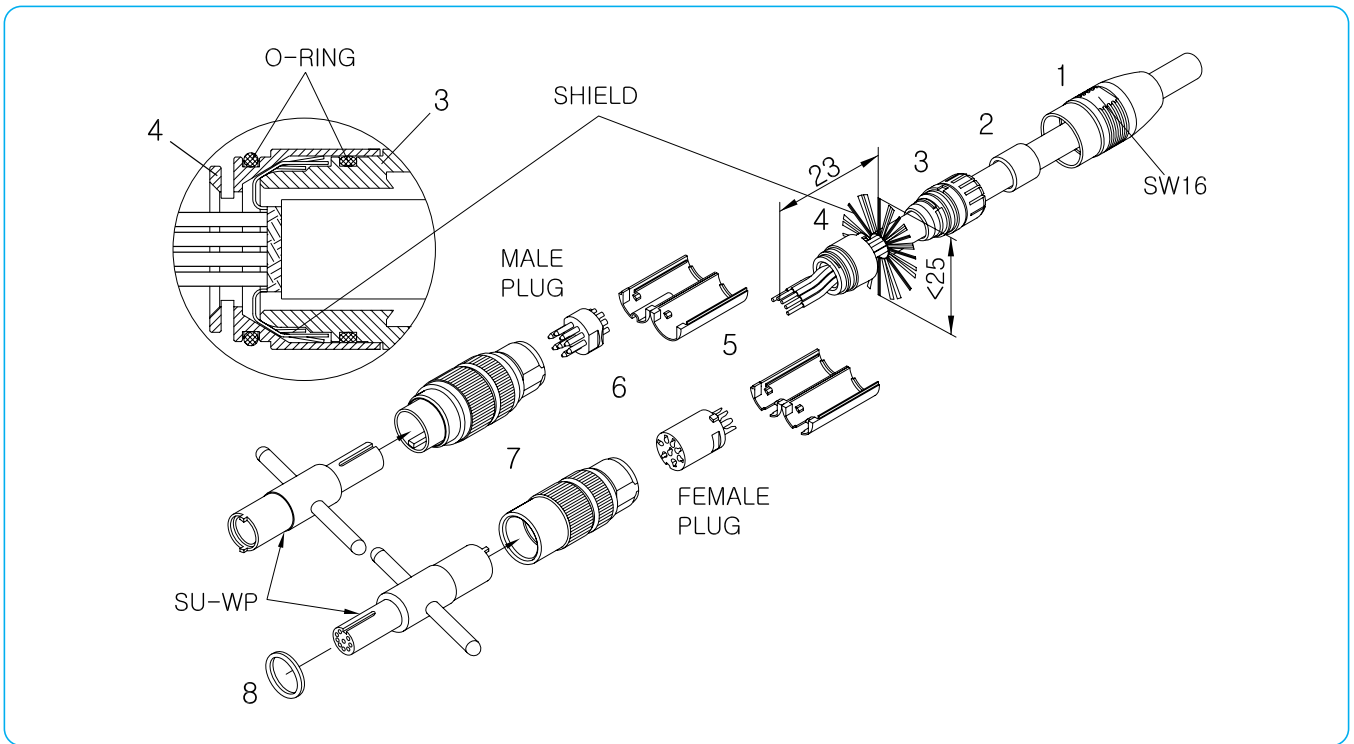


20 Size - 14 Core



Specifications subject to change without notice. Consult E-VALUCON for the latest specifications.

SU,SU1 Cable Assembly Instruction



Specifications subject to change without notice. Consult E-VALUCON for the latest specifications.



Features

- AISG 1.1/2.0 Protocol Standard
- IP 67/IP 68 Protection
- IEC 60130-9 Compliant
- UL Recognized  US
- Safe Connection / Easy Mounting
- DIN 45326 Standard
- RoHS Compliant
- Cost Effective

Applications

- Telecommunication
- Smart Bias Tee
- Lightning Protection Unit
- RCU (Remote Control Unit)
- General Industrial
- CCU (Central Control Unit)
- Junction Box
- RET Control Cable
- Power Signal Splitter

Part Numbering

Series	Size	Body Type	No. of Contacts	Contact Type	Cable Option	Notes
SU2	20	SP	3,4,5,6	P	6.0 / 8.0 / 9.0	Plug (Pin Contact)
SU3		P	8,12,14	S		Plug (Socket Contact)



Ordering Part Number
(see examples)

Connector Series
 SU2 : With Circular Cap
 SU3 : With Hexagonal Cap

Body Type
 SP : Plug
 P : Plug

No. of Contacts
 3,4,5,6,8,12,14

Contact Type
 P : Pin
 S : Socket

Cable Option (Applicable Cable Size)
 6.0 : Ø4.1mm~Ø6.0mm
 8.0 : Ø6.1mm~Ø8.0mm
 9.0 : Ø8.1mm~Ø9.0mm

Examples

SU2 - 20SP - 5P - 6.0
 SU2 Series - Size 20 - 5 Pin Contact - Cable Option 6.0

SU3 - 20P - 8S - 8.0
 SU3 Series - Size 20 - 8 Socket Contact - Cable Option 8.0

Specifications subject to change without notice. Consult E-VALUCON for the latest specifications.

Major Performance / Contact Arrangements

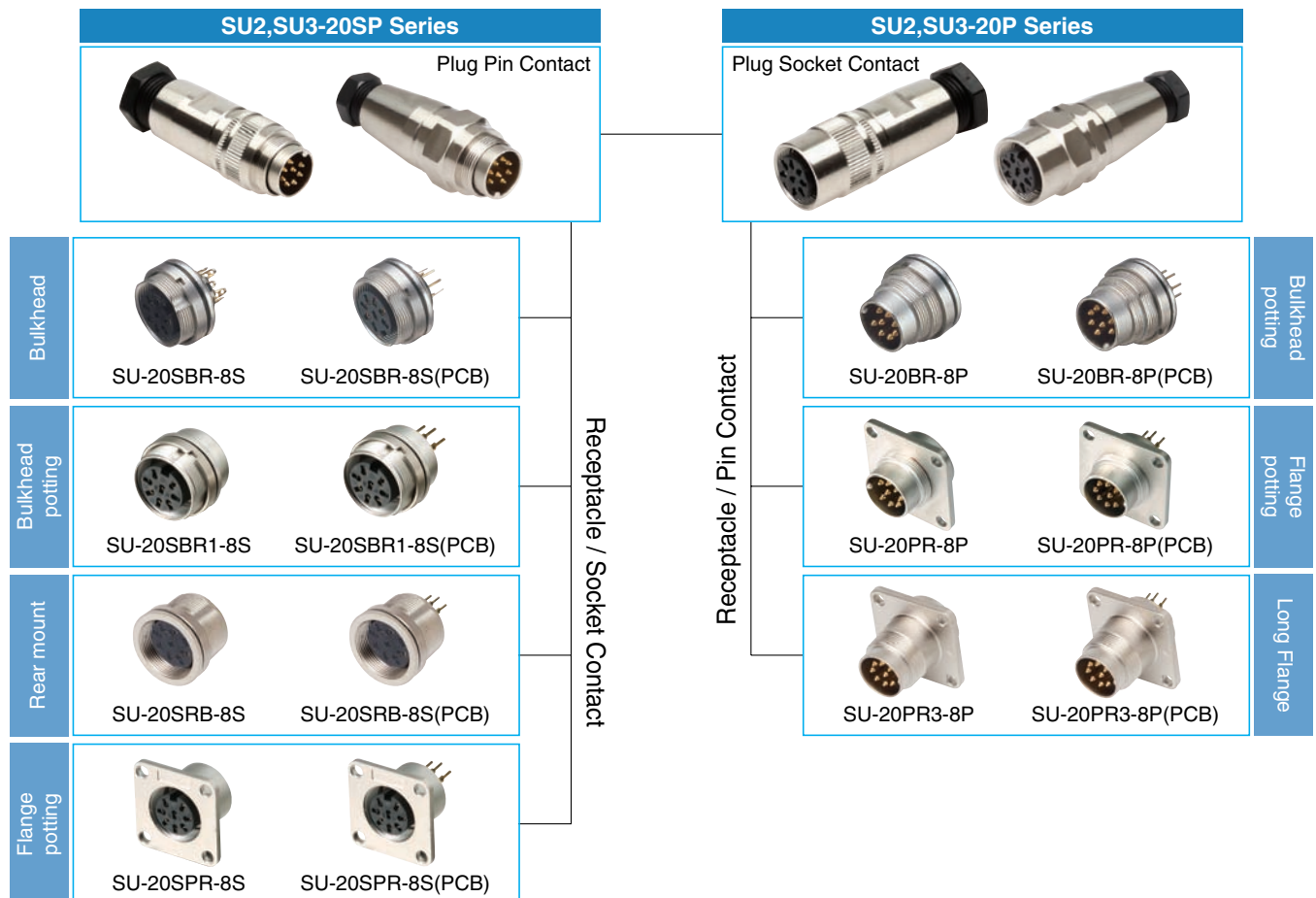
Performance \ Size / No. of Contacts	Size 20						
	3	4	5	6	8	12	14
Contact Arrangement							
Rated Voltage	250V					60V	
Rated Current(40°C)	5A					3A	
Rated Impulse Withstand Voltage	1500V					1000V	
Insulation Resistance	> 10 ¹⁰ Ω						
Contact Resistance	< 5mΩ						
Wire Gauge	max.0.75mm ² (max.AWG 20)					max.0.25mm ² (max.AWG 24)	
Cable Diameter	Ø4 ~ Ø8						
Temperature Range	- 40°C ~ +85°C						
IP Protection Rating	IP67						

- ¹ Withstanding voltage is the tested voltage value.
- ² Insulation resistance is measured at DC 100V.
- ³ Contact resistance is measured at DC 1A.
- Specifications subject to change without notice.
- Consult Sam Woo Electronics for the latest specifications.
- ⁴ Connector contact arrangement is from solder pot(plug).

Material Used / Finish

	Material	Finish
Body	ZnDC, Brass	Ni Plating
Insulator	PA	Black
Contacts	Pin	Gold Plating
	Socket	Phosphor Bronze

SU2,SU3 Series Mini-map



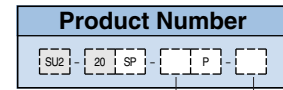
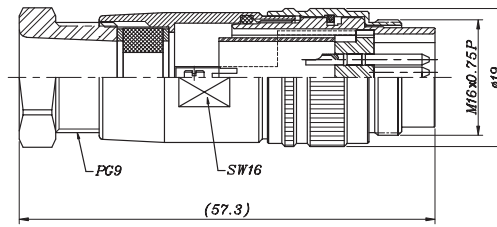
SU2 PLUG

SU2-20SP Series

Pin Plug



SU2-20SP-8P-8.0



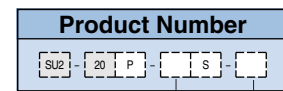
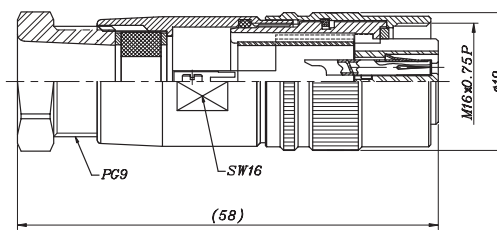
Applicable cable size :
 6.0 : Ø4.1mm~Ø6.0mm
 8.0 : Ø6.1mm~Ø8.0mm
 9.0 : Ø8.1mm~Ø9.0mm
 No. of Contact :
 3,4,5,6,8,12,14

SU2-20P Series

Socket Plug



SU2-20P-8S-8.0



Applicable cable size :
 6.0 : Ø4.1mm~Ø6.0mm
 8.0 : Ø6.1mm~Ø8.0mm
 9.0 : Ø8.1mm~Ø9.0mm
 No. of Contact :
 3,4,5,6,8,12,14

Spanner Lock Type

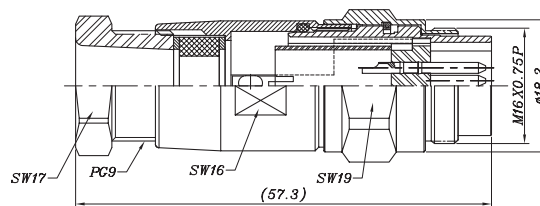
SU3 PLUG

SU3-20SP Series

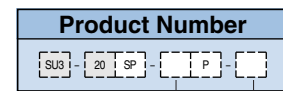
Pin Plug



SU3-20SP-8P-8.0



* Spanner Size : SW19



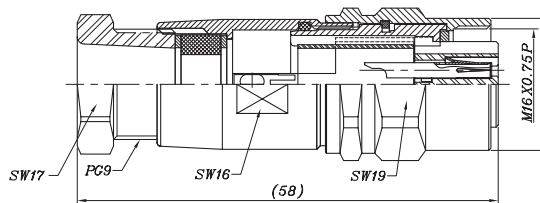
Applicable cable size :
 6.0 : Ø4.1mm~Ø6.0mm
 8.0 : Ø6.1mm~Ø8.0mm
 9.0 : Ø8.1mm~Ø9.0mm
 No. of Contact :
 3,4,5,6,8,12,14

SU3-20P Series

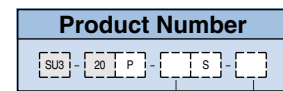
Socket Plug



SU3-20P-8S-8.0



* Spanner Size : SW19



Applicable cable size :
 6.0 : Ø4.1mm~Ø6.0mm
 8.0 : Ø6.1mm~Ø8.0mm
 9.0 : Ø8.1mm~Ø9.0mm
 No. of Contact :
 3,4,5,6,8,12,14

Specifications subject to change without notice. Consult E-VALUCON for the latest specifications.



Features

- AISG 1.1/2.0 Protocol
- DIN 45326 Standard
- Available in UL20866 and UL20276
- Female to Female, Male to Male, Female to Male
- Available in 1m to 100m
- RoHS Compliant
- IP 67/IP 68 Protection
- PVC Free

Applications

- Telecommunications
- RET Control Cable
- Adapter Cable
- General Industrial

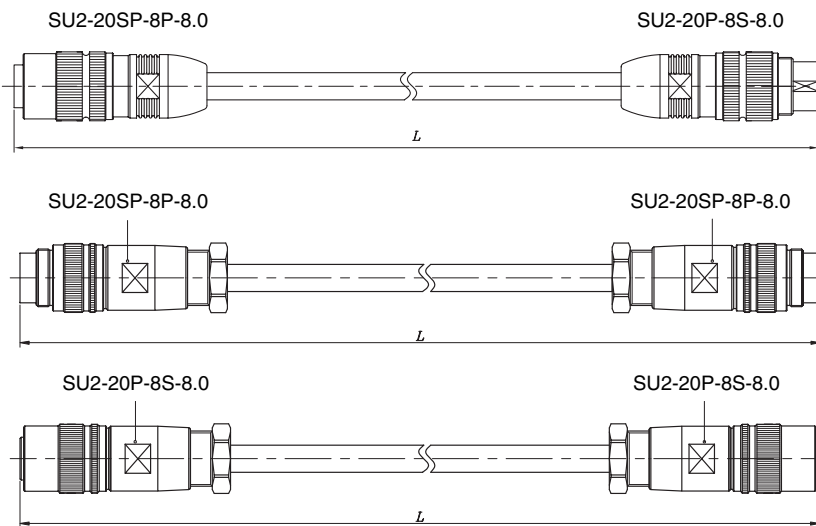
Part Numbering

Connector A		Connector B		Cable Length, L(m)	Part Number
SU2-20SP-8P-8.0	Male contact	SU2-20P-8S-8.0	Female contact	1m~ 100m	SW - 5207 - ***
SU2-20SP-8P-8.0	Male contact	SU2-20SP-8P-8.0	Male contact	1m~ 100m	SW - 5208 - ***
SU2-20P-8S-8.0	Female contact	SU2-20P-8S-8.0	Female contact	1m~ 100m	SW - 5209 - ***

* The last three digits of part number indicates cable length. Cable length can be customized.

Connector A

Connector B



MODEL NO.	L	MODEL NO.	L
SW-5207-001	1M	SW-5207-025	25M
SW-5207-002	2M	SW-5207-040	40M
SW-5207-003	3M	SW-5207-050	50M
SW-5207-005	5M	SW-5207-060	60M
SW-5207-010	10M	SW-5207-080	80M
SW-5207-020	20M	SW-5207-100	100M

MODEL NO.	L	MODEL NO.	L
SW-5208-001	1M	SW-5208-025	25M
SW-5208-002	2M	SW-5208-040	40M
SW-5208-003	3M	SW-5208-050	50M
SW-5208-005	5M	SW-5208-060	60M
SW-5208-010	10M	SW-5208-080	80M
SW-5208-020	20M	SW-5208-100	100M

MODEL NO.	L	MODEL NO.	L
SW-5209-001	1M	SW-5209-025	25M
SW-5209-002	2M	SW-5209-040	40M
SW-5209-003	3M	SW-5209-050	50M
SW-5209-005	5M	SW-5209-060	60M
SW-5209-010	10M	SW-5209-080	80M
SW-5209-020	20M	SW-5209-100	100M



● SW-5207-001

- Connector : SU2-20SP-8P-8.0 & SU2-20P-8S-8.0
- Cable Diameter : Ø8mm
- Cable Length : 1M

● SW-5215-001

- Connector : SU2-20SP-8S-6.0 & SU2-20P-8S-6.0
- Cable Diameter : Ø6mm
- Cable Length : 1M

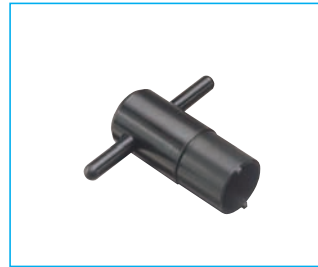
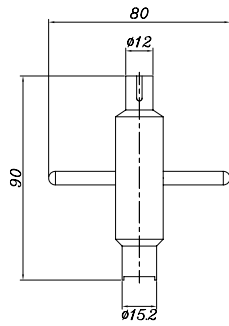
● **SU3** has same cable specification as SU2. Consult E-VALUCON for SU3 cable assembly.

Tool for SU,SU1 series



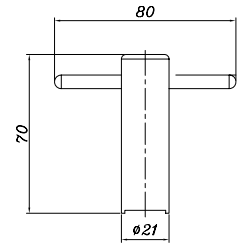
SU-WP

Tool for Plugs



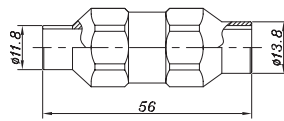
SU-WR

Tool for Receptacles



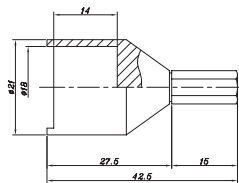
SU2-WP

Tool for Plugs

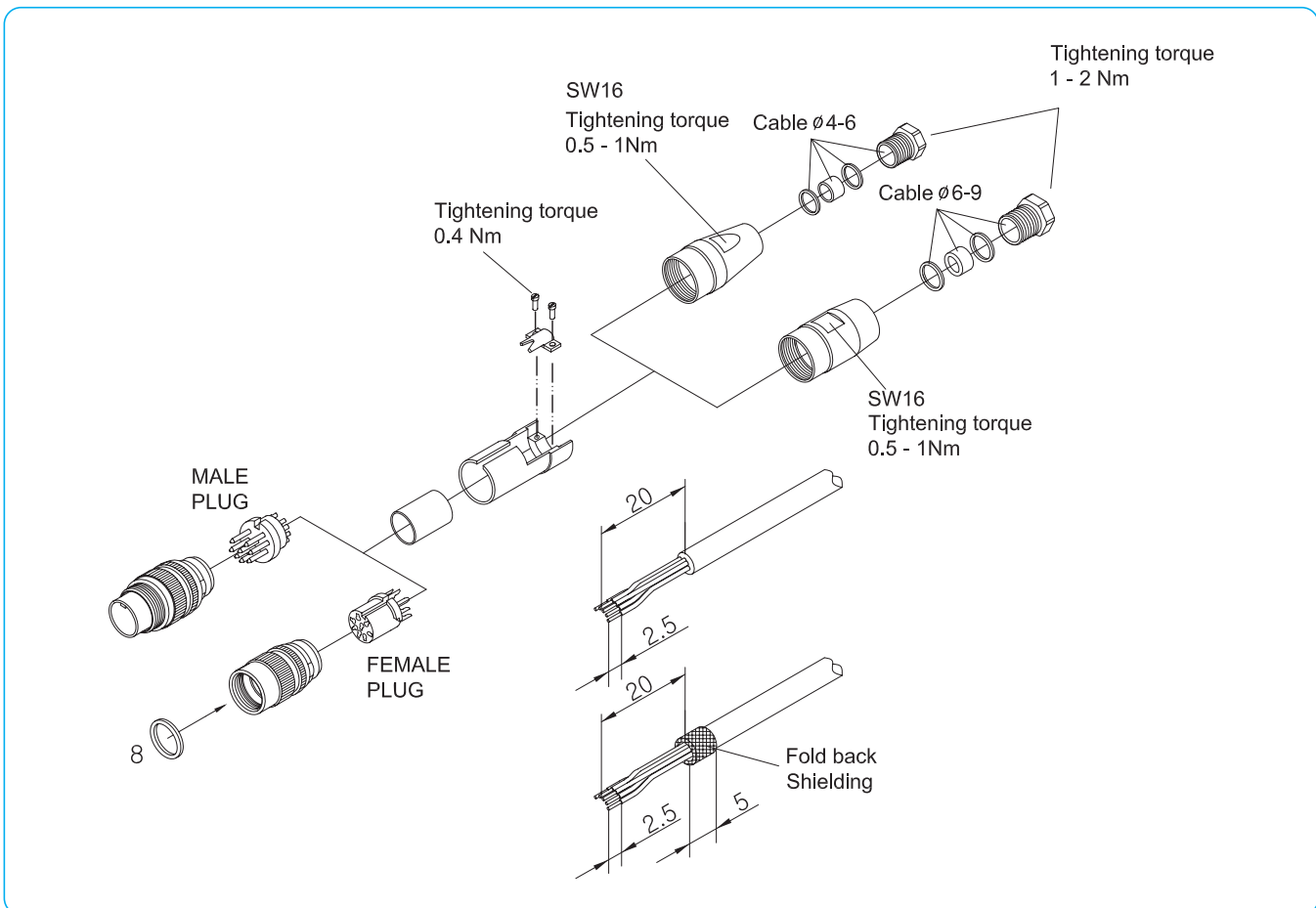


SU-WR-2

Tool for Receptacles



SU2, SU3 Cable Assembly Instruction



Specifications subject to change without notice. Consult E-VALUCON for the latest specifications.